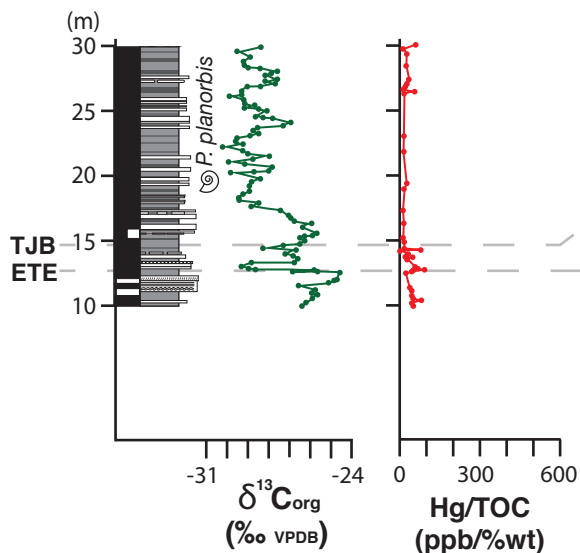
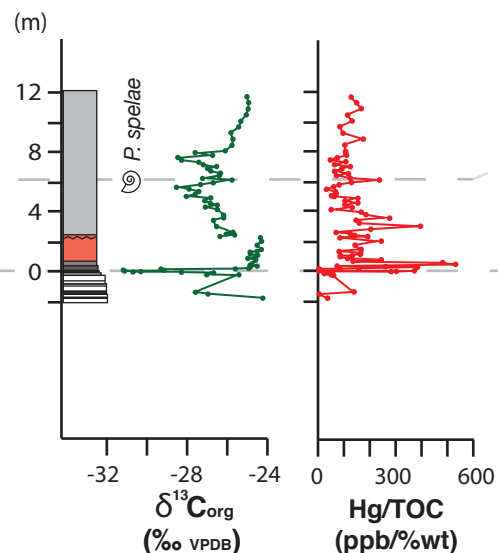


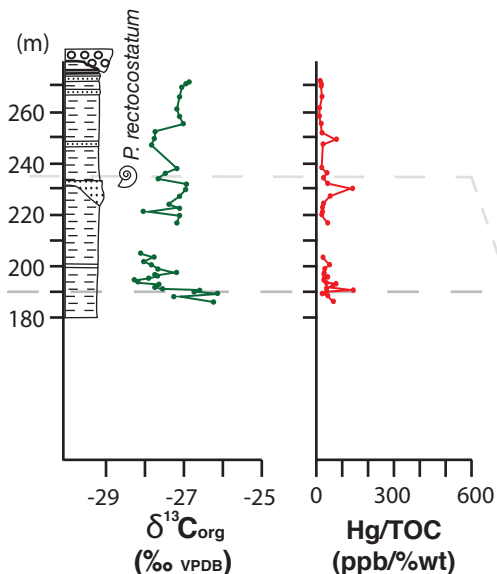
**A: ST AUDRIES BAY**



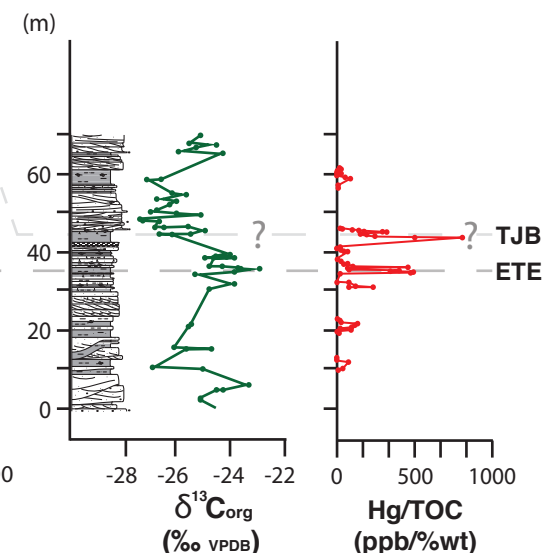
**B: KUHJOCH**



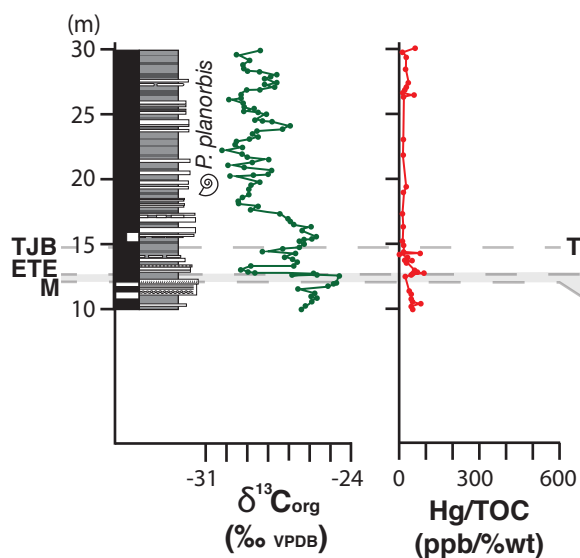
**C: ARROYO MALO**



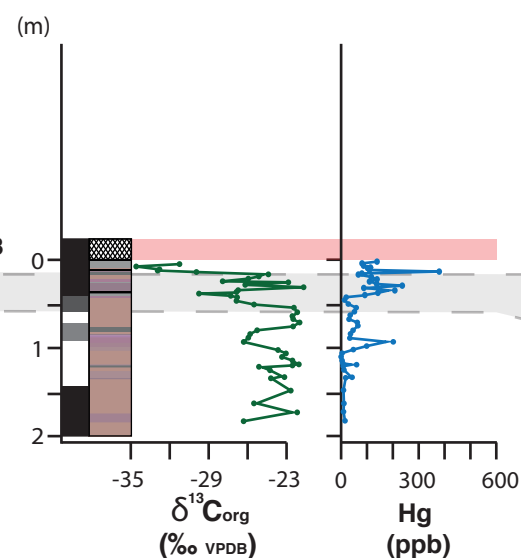
**D: ASTARTEKLÖFT**



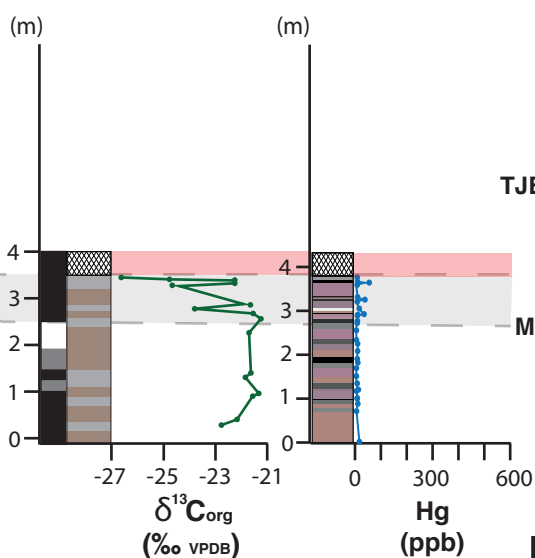
**A: ST AUDRIES BAY**



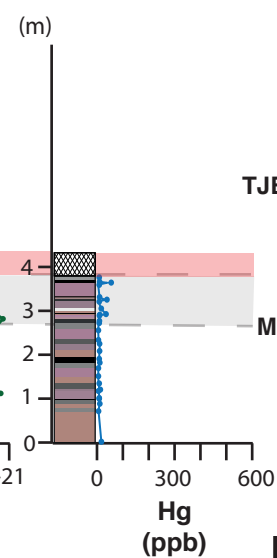
**E: PARTRIDGE ISLAND**



**ARGANA**

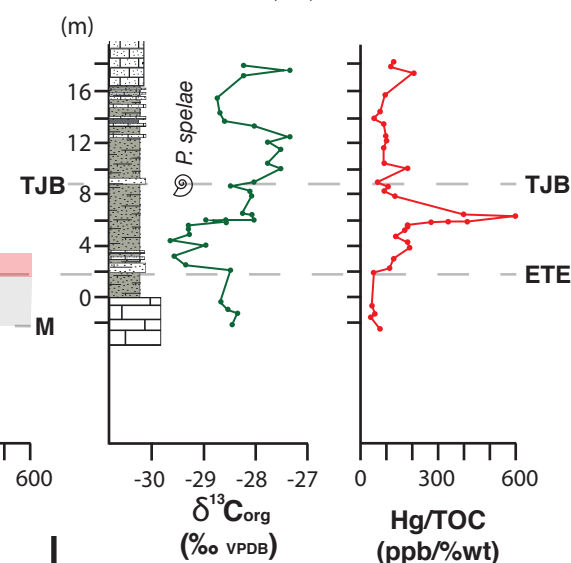


**F: IGOUNANE**



**G: NEW YORK CANYON**

From Thibodeau et al. (2016)



Lithology\*:  CAMP basalt  Mudstones (color indicates the color of the mud in outcrop)

\* Applicable only at Partridge Island, Argana, and Igounane. Other lithological data sourced from previously published works (see figure caption).